

Primary Care News



March 2022

Welcome to your Primary Care newsletter published by the *Kent & Medway Primary Care Training Hub*.

4-day PCI Accredited Tailored Health Coaching Development Programme

This training opportunity is offered to PCNs within Kent & Medway CCG.

Peak Health Coaching's PCI-Accredited 4-day Tailored Health Coaching Development Programme has been designed by GPs and Educational specialists to provide the ideal learning environment for participants to learn advanced coaching skills. As clinicians, we will be able to bring the learning to life with real examples from our own practice and share our experience of coaching in clinical and non-clinical settings. Our team are well-placed to support coaches to appreciate their unique place in the NHS landscape from where they can make their significant contribution to the journey of their patients and clients.

More information and to [register on Eventbrite](#).

Apprenticeships in Primary Care

An Apprenticeship is on-the-job training that leads to national and international recognised qualifications ranging from Level 2 (GCSE-equivalent) to Level 7 (Masters-equivalent) and open to ages 16 and over.



Apprenticeships in Primary Care broaden the scope of training and developing for existing staff, whilst attracting new members of staff to improve diversity and bridging gaps in the workforce. They provide a future pipeline for clinical and non-clinical roles, simplify career progression, counteract an ageing workforce and provide a life blood to Primary Care workforce. Apprenticeship qualifications are available in a wide range of areas and levels in the Health and Social Care sectors including nursing, healthcare support, business administration, advanced clinical practitioner, team leading, HR, IT just to name a few.

Please refer to the [HASO website](#) for more Health and social care related apprenticeship standard HASO.

Contact us on kmccg.pcthapprenticeships@nhs.net



Focus on: Nursing Associate Level 5

This is a new occupation introduced into the health and care workforce to bridge the gap between health and care assistants and registered nurses.

Find out more about the [Nursing Associate apprenticeship](#).

Functional Skills

[Functional Skills English and Maths](#) are requested to start an apprenticeship or to progress in many position; they provide people of all education levels with accessible skills to improve reading, writing and communications, allow a better understanding of numbers and mathematical concepts, and are one of the most popular qualifications taken by adult learners.

Interested in Apprenticeships?

Find out about creating your own [Digital Service Account \(DAS\)](#) to manage funding, job vacancies, find training providers etc.

GPwER and PwER: Gain Your Accreditation

Are you a GP or Practitioner who undertakes activities beyond the scope of general practice and

that required additional training?

The next Kent & Medway Primary Care Training Hub panel will be in June to deliver GPwER/PwER accreditation to eligible GPs and Practitioners.

[Read more about accreditation and criteria.](#)



RCN Nursing Awards 2022

The RCN Nursing Awards celebrate incredible contributions to outstanding patient care and are open to all UK nurses, midwives, health visitors, nursing students and nursing support workers. You do not need to be an RCN member to enter the RCN Nursing Awards.

Entries for [the RCN Nursing Awards 2022](#) are now open. The deadline to submit your entry is Friday 25 March.

Edward Jenner Programme - NHS Leadership Academy

This programme is designed for all colleagues in health and care aspiring to their first leadership or management role within the health and care sector within the next 1-2 years.

Course 0: An introduction to personal development

Find out [more information and how to apply.](#)

New supportive guidance for newly qualified Nursing Associates

The Royal College of Nursing have released [new supportive guidance](#) for newly qualified Nursing Associates. It covers many aspects with relevant and supporting links.

Topics covered include:

- standards of proficiency set out by the Nursing and Midwifery council
- advice on registration
- a pre-employment checklist
- an overview of preceptorship
- supportive information and guidance on appraisals and wellbeing

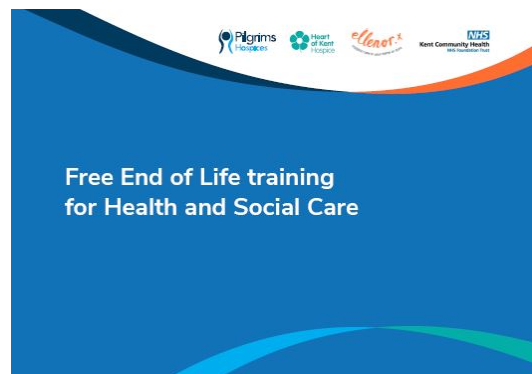
Supporting GPs through maternity programme

This five-week coaching programme takes GP mothers on maternity leave or shared parental leave through everything they need to think about to plan a confident return to work to thrive.

Read more about [this programme](#), available for all London-based GPs and GP trainees in London or KSS.

Free end of life training for Health & Social Care

The Kent and Medway Education Collaboration was inspired and launched in response to unprecedented numbers of COVID-19 related deaths, and their impact within health and social care at the start of the Pandemic.



The Kent and Medway Commissioning Group and NHS England have supported the funding of an additional 100 sessions with [11 different topics on end-of-life care](#).

To book sessions visit www.eventbrite.co.uk and search for Ellenor Courses or contact Sue Marshall via email practice.development@ellenor.org or mobile **07495 903478**.

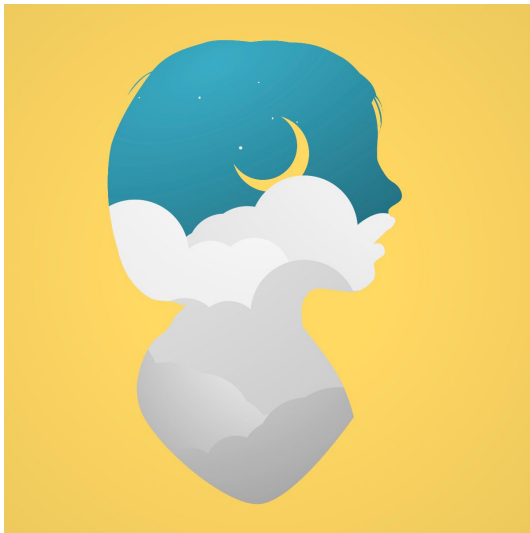
BSMS and KMMS Colloquium

Brighton and Sussex Medical School (BSMS) and Kent and Medway Medical School (KMMS) invite you to the first in a series of annual collaborative health educational conferences, which will take place online, via Zoom, on **Wednesday 30 March, 1pm-5.30pm**.

The half-day colloquium will explore the latest issues in medical education, with speakers from BSMS and KMMS. Sponsored by the Association for the Study of Medical Education (ASME) as a South East Regional Conference, this event is free and open to all healthcare professionals in the region, so please share widely within your networks. [Find out more](#).

[Register for the Colloquium](#)

**Finding peace in a frantic world
- Mindfulness Course**



<https://www.tenterdenmindfulness.co.uk/>

Using the discount code BLUELIGHTAPR22 places can be booked for 90% off the usual rate - that's just £15 for a full 8 week mindfulness course taught by one of our team of professional and accredited Mindfulness teachers, Julia Lofts.

Date options:

Starting Wednesday 20th April for 8 Weeks (evenings) online

Starting Saturday 23rd April for 8 Weeks (mornings) online

Simulation Day - Emergencies in Primary Care

A diverse Primary Care workforce participated to the Simulation Day at the Digital Innovation Centre in Folkestone. The delegates met the mannequins to practise different emergency situations before tackling VR scenarios.



If you are interested by Simulation Training, please contact jane.roome@nhs.net



MEDSTART4U Taster Days

[MedStart4U](#) is a scheme organised by East Kent Hospital University NHS Foundation Trust and the Kent & Medway Primary Care Training Hub, aimed at Year 11 and 12 students who are thinking about becoming a doctor.

The taster day offers a great insight into what a career in medicine involves and includes an introduction to what a day in the life of trainee doctor is actually like. On February 22, 2022, students met at the Education Centre, Queen Elizabeth the Queen Mother Hospital, Margate.

The next session will be on Tuesday 29th March 2022 at the Education Centre, William Harvey Hospital, Ashford. More information on ekhft.medstart4u@nhs.net

Safe Havens in Kent - Kent & Medway CCG

Are you feeling stressed, anxious or that things are too much for you?

Come to one of the Safe Havens in Kent: Free mental health support for anyone aged over 16.

Open every night for face-to-face or virtual support.

[Medway Safe Haven](#)

[Canterbury Safe Haven](#)

[Maidstone Safe Haven](#)

[Thanet Safe Haven](#)

No Smoking Day - Smokers urged to quit with One You Kent

Smokers in Kent are being urged to give quitting another go this No Smoking Day with support from One You Kent services. Kent Community Health NHS Foundation Trust provides smoking cessation services across Kent.



Mark Cummings, One You Kent Locality Lead said: "Hundreds of smokers have come forward and successfully quit with One You Kent's support during the pandemic, which is fantastic. Quitting smoking doesn't have to be stressful. We offer a range of support to suit people at times convenient for you.

Call **0300 123 1220**, or go to www.kent.gov.uk/smokefree

LPS preparation update for Primary Care

[This update](#) from the National Network of Named GPs describes the proposed role of General Practitioners related to the Liberty Protection Safeguards (LPS) and actions that will need to be taken on request, by the Responsible Body, for confirmation of an impairment or disturbance of the mind or brain. This process is in draft and may change once the Code of Practice has been published, therefore if you have any queries please do email england.safeguarding@nhs.net

As you may be aware the implementation of the LPS has been delayed further with no new date proposed, however this hiatus has offered our system time to prepare. Training on the Mental Capacity Act and its usage can be accessed through eLearning for Health at <https://www.e-lfh.org.uk/>

Contact your local Training Hub:

East Kent Training Hub: eastkent.traininghub@nhs.net

North Kent Training Hub: northkent.traininghub@nhs.net

West Kent Training Hub: kmccg.wkenttraininghub@nhs.net

The KMPCTH Newsletter is created by the Communications Team.

The deadline to submit news and updates is the **10th of each month.**

Subscribe to [Kent & Medway Primary Care News.](#)



This email was sent to <<Email Address>>

[why did I get this?](#) [unsubscribe from this list](#) [update subscription preferences](#)

Kent & Medway Primary Care Training Hubs · Kent House · 81 Station Road · Ashford, Kent TN23 1PP · United Kingdom