

## Primary Care News



June 2022

Welcome to your Primary Care newsletter published by the *Kent & Medway Primary Care Training Hub*.

---

**Exciting update: The Kent & Medway Primary Care Training Hub have created a new YouTube channel!**



Watch our videos to discover the wide variety of roles in Kent & Medway, meet the Primary Care workforce and learn more about the opportunities the Training Hub offers.

Please [subscribe](#), watch and like our videos to avoid missing on training opportunities or information relevant to primary care.

You can sign up to YouTube for free using a Google Account. You also can watch videos for free without a subscription account.

---



**Don't miss out on training opportunities or information:**

Follow the KMPCTH other social media channels:

[Twitter](#)

[LinkedIn](#)



## Book your place on the New to Practice Programme 2022/23

The New to Practice Programme is a national initiative designed to support newly qualified GPs, Nurses and Nursing Associates and to help them to gain confidence and skills to successfully begin their career in general practice and thrive.

Download the New to Practice Programme brochure 22/23.

To book your place, please download and complete:

1. [Enrolment Form](#)
2. [Monitoring Form](#)

And return it to [kmpcth@nhs.net](mailto:kmpcth@nhs.net) making sure you copy your practice/line manager in your email.

---

## Fellowships in Kent & Medway

The closing date for application has been extended to the 30<sup>th</sup> of June.

Download the [Fellowship Brochure](#) for more information and to apply.



---

## Apprenticeships in Primary Care

An Apprenticeship is on-the-job training that leads to national and international recognised qualifications ranging from Level 2 (GCSE-equivalent) to Level 7 (Masters-equivalent) and open to ages 16 and over.



Apprenticeships in Primary Care broaden the scope of training and developing for existing staff,

whilst attracting new members of staff to improve diversity and bridging gaps in the workforce. They provide a future pipeline for clinical and non-clinical roles, simplify career progression, counteract an ageing workforce and provide a life blood to Primary Care workforce. Apprenticeship qualifications are available in a wide range of areas and levels in the Health and Social Care sectors including nursing, healthcare support, business administration, advanced clinical practitioner, team leading, HR, IT just to name a few.

Please refer to the [HASO website](#) for more Health and social care related apprenticeship standard HASO. Contact us on [kmccg.pcthapprenticeships@nhs.net](mailto:kmccg.pcthapprenticeships@nhs.net)

---

## Focus on: Improvement Practitioner – Level 4

Improvement Practitioners (IPs) use project and change management principles and tools to identify and lead the delivery of change across organisational functions and processes.

Find out more about the [Improvement Practitioner](#)

---



### Functional Skills

[Functional Skills English and Maths](#) are requested to start an apprenticeship or to progress in many position; they provide people of all education levels with accessible skills to improve reading, writing and communications, allow a better understanding of numbers and mathematical concepts, and are one of the most popular qualifications taken by adult learners.

## Interested in Apprenticeships?

Find out about creating your own [Digital Service Account \(DAS\)](#) to manage funding, job vacancies, find training providers etc.

---

## [Clinical Training Sessions for Practice Nurses and Nursing Associates](#)

**Management of Venous Leg Ulcers** - 14 & 15 September (18 People Max)

**Understanding Mental Health in Primary Care** - 13 & 14 July (18 People Max)

For more information, please contact [edafe.rogun@nhs.net](mailto:edafe.rogun@nhs.net)

---

## Clinical Supervision Opportunity for General Practice Nursing Teams

A one-day interactive course suitable for Practice Nurses, Healthcare Assistants and Nursing Associates who wish to train as Clinical Supervisor. 2 dates available.

Download the [Clinical Supervision flyer](#) for more information and to book your place.

---

## Spirometry Training

The KMPCTH is funding several [Spirometry](#) training days.

### 2-day Spirometry competency assessed training

- Thursday 30th June (8.45am – 4.30pm) and Thursday 29th September
- Thursday 8th September (8.45am – 4.30pm) and Thursday 8th December

### Spirometry interpretation updates:

- 4<sup>th</sup> July (1.00pm – 2.30pm)
- 13<sup>th</sup> September (1.00pm – 2.30pm)
- 14<sup>th</sup> September
- 19<sup>th</sup> October

### 2-day Spirometry competency assessed training for Healthcare Assistants

- Wednesday 6<sup>th</sup> July and Wednesday 5<sup>th</sup> October (8.45am-1pm)

To book a place please contact Natasha Beckett at [natasha@respiricare.com](mailto:natasha@respiricare.com)

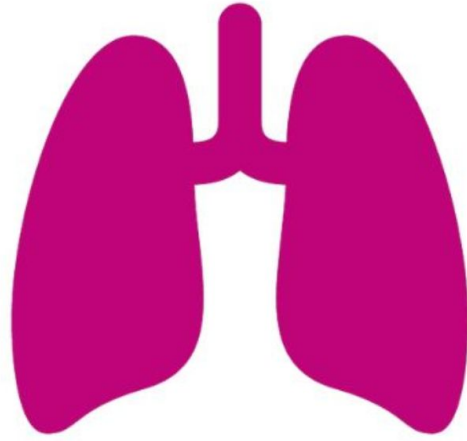
---

## Kent & Medway Respiratory Conference 2022

**Saturday 10<sup>th</sup> September 2022 – Keep the  
date in your diary!**

This year will focus on a Healthy planet -  
healthy lifestyle - healthier lungs where we

will explore ways to make our lifestyles & health-care carbon neutral.



There will be Sessions on latest Asthma guidelines & reducing reliance on salbutamol, COPD - Kent/Medway new guidance, Greener inhalers & Greener healthcare, Lung cancer screening - with low dose CT scanners and many more.

**Please register with the link below.** NHS staff should use their [nhs.net](mailto:nhs.net) emails to help the organisers.

[Kent & Medway Respiratory Conference 2022](#)

---

## **Reducing Carbon Footprint of Inhaler Prescribing**

This guide “[How to Reduce the Carbon Footprint of Inhaler Prescribing](#)” has been written for healthcare professional and focuses on adult respiratory care (may be useful in children over 12).

---

## **Supervision in Primary Care: understanding the different paths available**

- [Becoming a Clinical Supervisor](#)
  - [Becoming a FCP Roadmap Supervisor](#)
  - [Becoming a Practice Supervisor](#)
  - [Becoming an Educational Supervisor](#)
  - [Becoming a Practice Assessor](#)
- 

## **Medway Long-Acting Reversible Contraception (LARC) Training Programme**

The programme is designed to encourage the uptake of Long-Acting Reversible Contraception (LARC) for all women and especially for young people.

Free training is provided to GPs, Associate Physicians and Practice Nurses in the fitting of LARC

methods and support any training around contraception and sexual health in general.

There will be a launch event to take place at Bridgewood Manor hotel on Tuesday 12th July from 7pm onwards, with expert guest speaker Dr Ali Kubba, MB ChB FRCOG FFSRH, Guys and St Thomas', Consultant gynaecologist, colposcopist, and sexual and reproductive health specialist delivering a **CONTRACEPTIVE UPDATE** with Q and A session to follow.

More information and to register your interest – [Helen.Garbacz@nhs.net](mailto:Helen.Garbacz@nhs.net)

---

## RESTORE2 – new training dates added

Kent Surrey Sussex Patient Safety Collaborative (KSS PSC) has had such a great response to its RESTORE2 training that it's added in some extra dates through to the end of June – [sign up now via Eventbrite](#).

[This video](#) gives more info on how RESTORE2 can be used to spot signs of deterioration, and to find out more about RESTORE2 and KSS PSC's training email Kerry Dudley - [kerry.dudley5@nhs.net](mailto:kerry.dudley5@nhs.net)

---

## Macmillan Primary Care Cancer Awareness

Edenwood Place, July 6<sup>th</sup>, 2022

[Primary Care Cancer Awareness](#): one-day face-to-face event for Kent & Medway Primary Care clinical staff.



---

## Cancer Care Coordinator Newsletter

Designed to support Cancer Care Coordinators, Social Prescribers, Health and Wellbeing Coaches and those within Kent and Medway Primary Care admin roles with enhanced cancer support. Read the [newsletter](#).

---

## Mental Health Awareness Training

This course is specifically for [Primary Care Reception/Administration teams](#) to help increase mental health awareness and give an understanding of how to manage patients presenting mental health symptoms on the phone or in surgery.

---

## Calling All Apprentices: The Big Apprentice Meet-up

Friday 1<sup>st</sup> July 2-6pm, Guildhall London

Marking the end of the London Careers Festival 2022, The [BIG Apprentice Meet Up](#) is a 2-part event consisting of a development session from 2-4pm, followed by a networking social from 4-6pm.

---

## Allied Health Professional Learning Course

Springpod is a careers platform which offers virtual work experience.

Find out more about this free work-related course for [Young Adults](#) or [Adult Learners](#)

---

## Domestic Abuse: Understanding the Domestic Abuse Act 2021

- [Information for GPs and Surgery Staff](#)
  - [Domestic Abuse and General Practice](#)
- 



## Developing Outstanding Leadership in Primary Care

Visit the [South East Leadership Academy](#) to discover the [Leadership Espresso modules](#) to support leaders across the healthcare system.

---

## Improving Partnership Working – Managing Complexity and Capacity

Kent and Medway Safeguarding Adults

This free half-day online event is designed for multi-agency partners across Kent and Medway.

[Book your place](#) on Tuesday 5<sup>th</sup> July 2022- 9.30am-12.30pm.

---

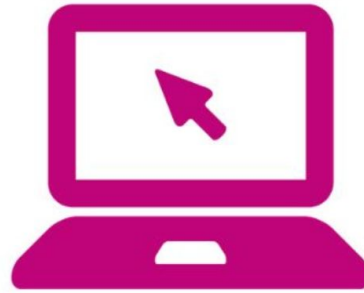
## Growing the Interprofessional Workforce for Integrated People-Centred Care

[“Growing the Interprofessional Workforce for Integrated People-Centred Care through Developing Place-Based Learning Cultures across the System”](#) – an article published in the International Practice Development Journal.

---

## Webinars: Emis Training Webinars for Primary Care

Our GPIT Training team are offering various [EMIS modules as Training Webinars](#) via Microsoft Teams, Clinical & Non-Clinical staff members are welcome to attend these sessions.



---

## Webinars: TNA Thursdays

A series of focussed sessions starting in June to support the preparation and successful recruitment of a Trainee Nursing Associates. All employers welcome. Details and Teams link for [TNA Thursdays](#).

---

## South East Greener NHS Green Plan Celebration Event

Join the online event on 5th July to [celebrate Green Plans](#) from across the South East!



### Kindness into Healthcare: An essential online course

**Unkindness costs lives.** Unkind behaviour at work harms colleagues' and patients' wellbeing.

[Kindness into Action](#) is an evidence-based, CPD-certified, online course, bringing to life the impact of respect, kindness, positivity and incivility in healthcare. The five short modules in Kindness into Action provide bite-sized access to practical tools and strategies that you can start using right away to nurture a culture of kindness, safety and wellbeing in your practice.

---

## Looking after your mental health - support for health and care staff

Resources for Primary Care workforce:



- The online [Mental Wellbeing Information Hub](#) has a wealth of information about services and support available.
- [talking wellness](#), is Kent and Medway's staff mental health and wellbeing service

---

## SIM4 Mental Health Events taking place in September and October 2022

[Online Mental Health Simulation-Based Education Event](#) on one of the following dates:

7 Sept | 5 October | Time: 8:00– 4:30 (8-8:30am Registration)

Platform: Microsoft Teams

Free for professionals working in Kent, Surrey, and Sussex. Early Bird Fee until 31 May 2022: £75 for all other UK regions. £90 GBP Worldwide. All tickets booked after 31 May: £100

---

## Desk-Based Yoga – Weekly Session

Join us [every Tuesday at 1pm](#) for a well-deserved 10min stretch and move session with Jane Taylor.

---

## Contact your local Training Hub:

Contact the Kent & Medway Primary Care Training Hub at [kmpcth@nhs.net](mailto:kmpcth@nhs.net)



---

The KMPCTH Newsletter is created by the Communications Team.

The deadline to submit news and updates is the **10th of each month**.

Subscribe to [Kent & Medway Primary Care News](#).



---

This email was sent to <<Email Address>>

[why did I get this?](#) [unsubscribe from this list](#) [update subscription preferences](#)

Kent & Medway Primary Care Training Hubs · Kent House · 81 Station Road · Ashford, Kent TN23 1PP · United Kingdom

